

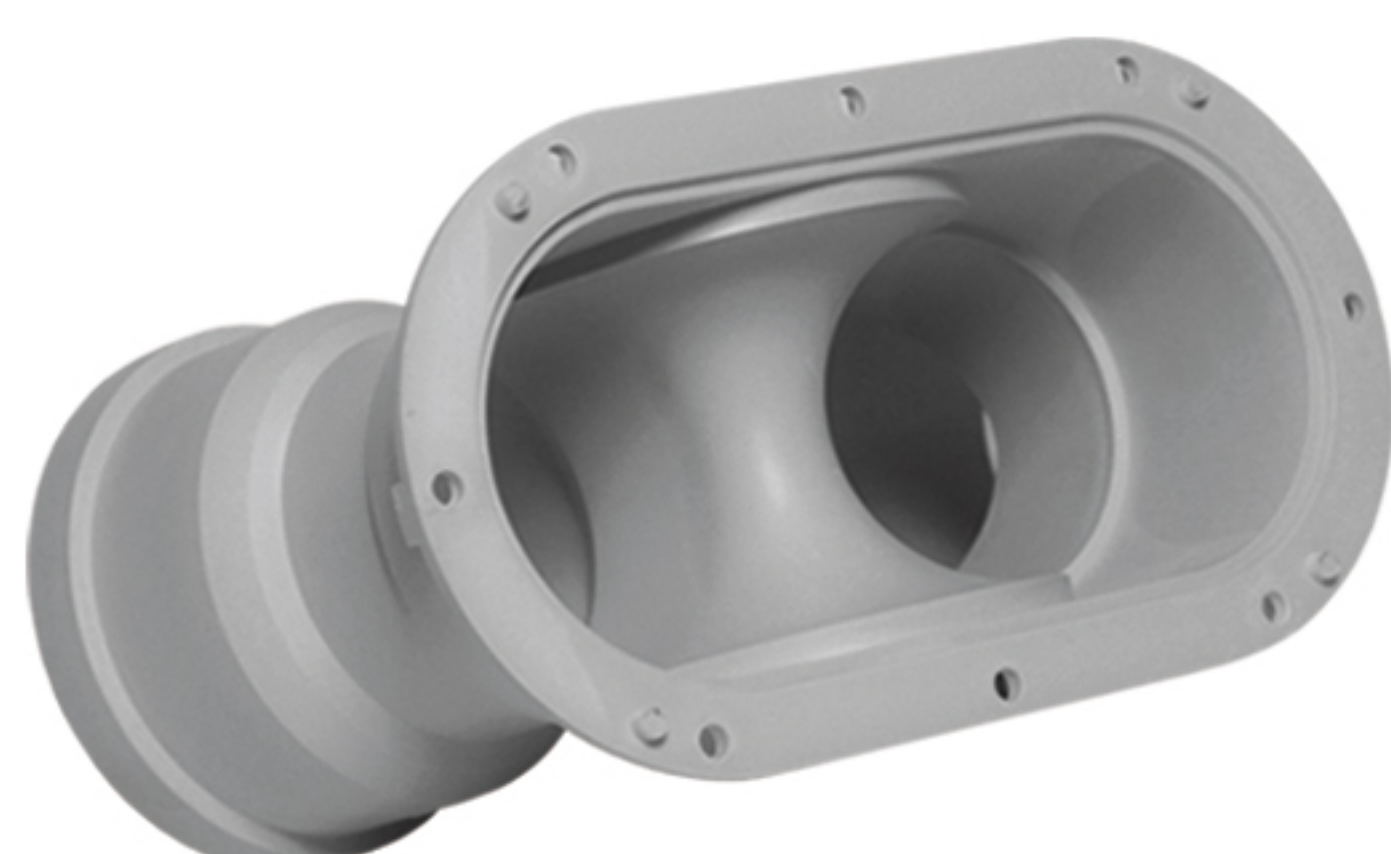
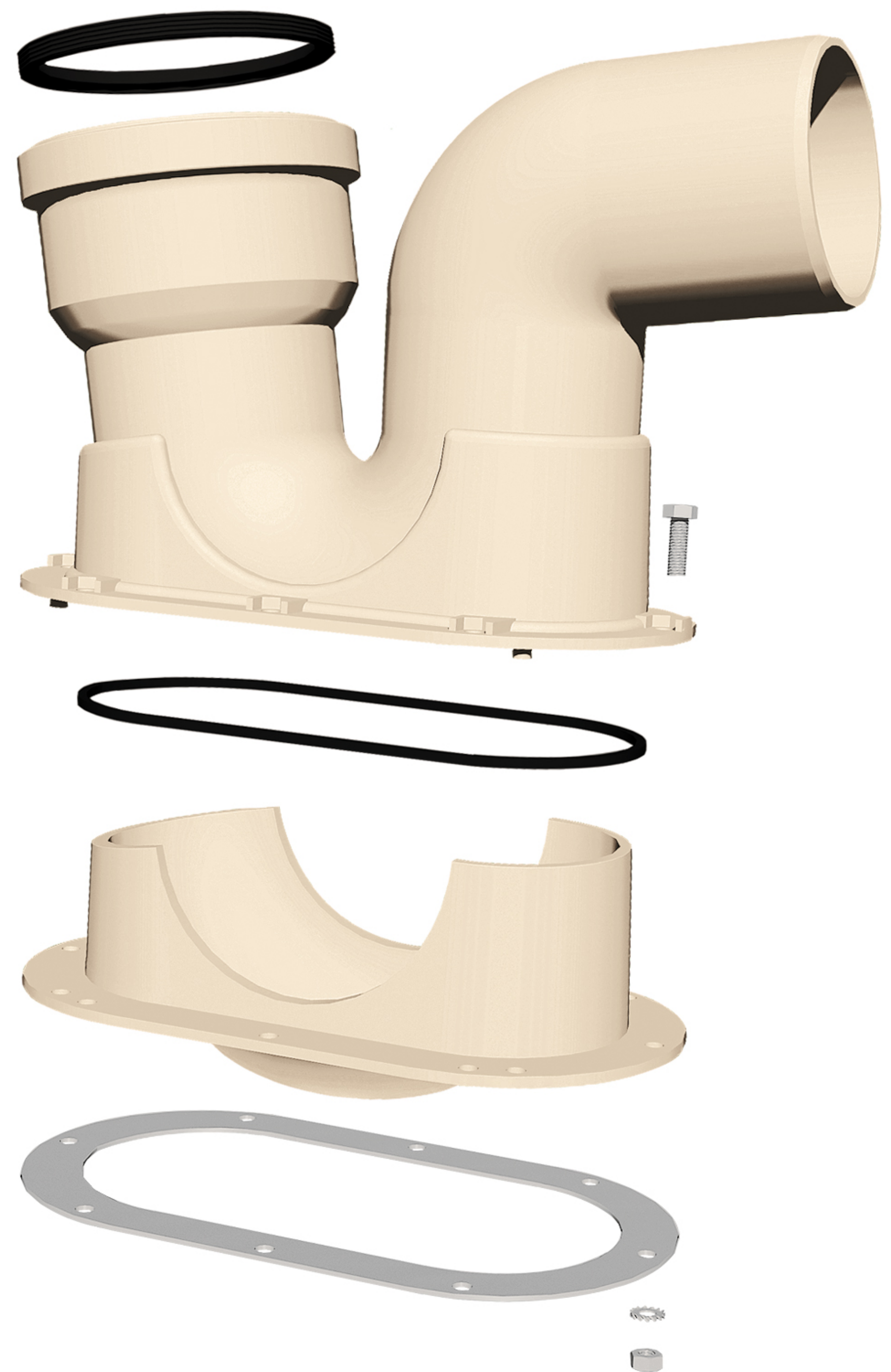


POLIRAN

Gated Trap

Poliran Gated trap is an innovative two-piece device, designed to maintain an adequate water seal that prevents the back passage of sewer gas without affecting the wastewater flow, while providing easy accessibility for cleaning and inspection.

- Designed and patented by Poliran's R&D department
- Available in Silent 10 & General Silent & Protect Push-Fit systems in two sizes : 110 mm & 75 mm
- Made of PP and specially designed for Push-Fit drainage system
- Can be easily opened for accessibility and cleaning
- Easy installation of sanitary fixtures because of push-fit socket inlet
- Adequate sealing water column height in compliance with International Plumbing Code
- Perfect and permanent watertightness
- Smooth Internal surface, preventing scale formation and blockage, ensuring an unobstructed flow
- Uniform cross-section along the water passage
- Trap outlet angle of 87°, facilitating installation with no need for an additional bend
- Safe and secure fastening by installing a pipe clamp under the inlet socket



Upper Part



Lower Part

Innovation is at the heart of Poliran. Our R&D Dept. is always looking to find innovative and reliable solutions for our customers' requirements.

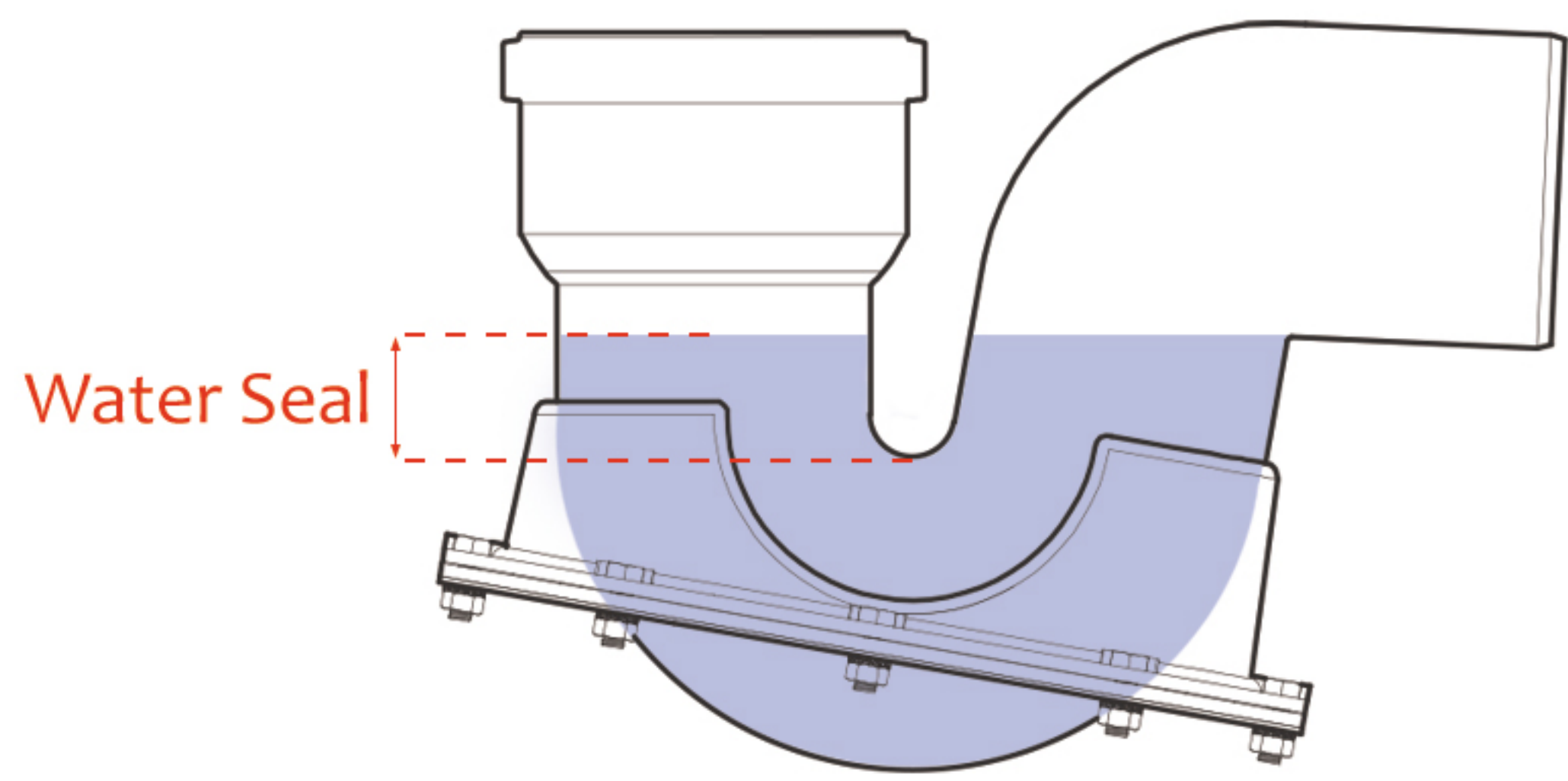
One of the major problems encountered during construction phase is blockage of traps with construction debris and it usually reveals itself in the final stages of project. Removing these blockages is not an easy task and contractors were often forced to replace the traps.

To solve this problem Gated trap has been designed, a two-piece trap that can be opened and easily cleaned. The proprietary design has been registered in Industrial property office of Iran.

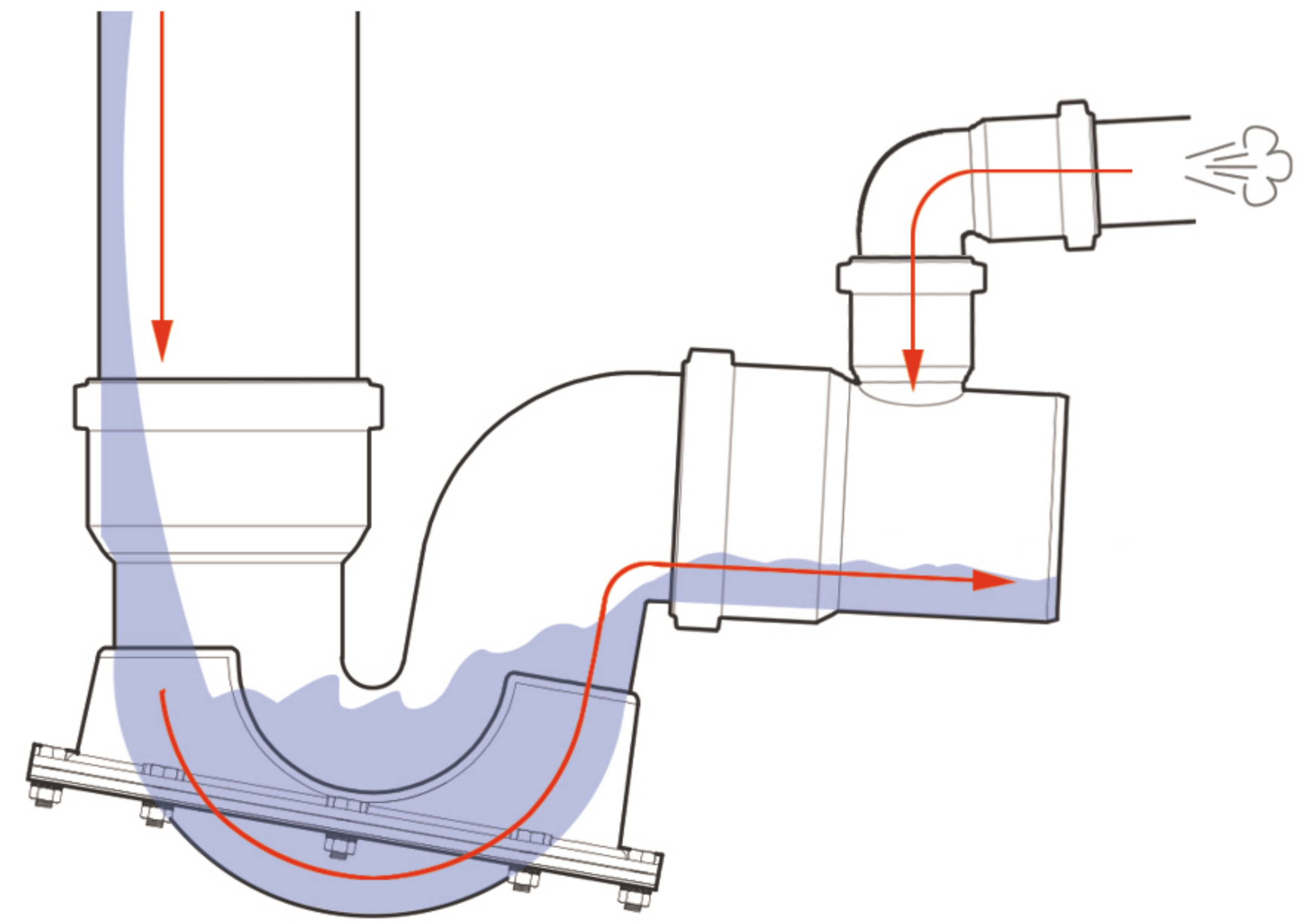
Gated Trap

www.poliran.org

Thoughtfully designed for optimum and reliable performance and easy installation and maintenance



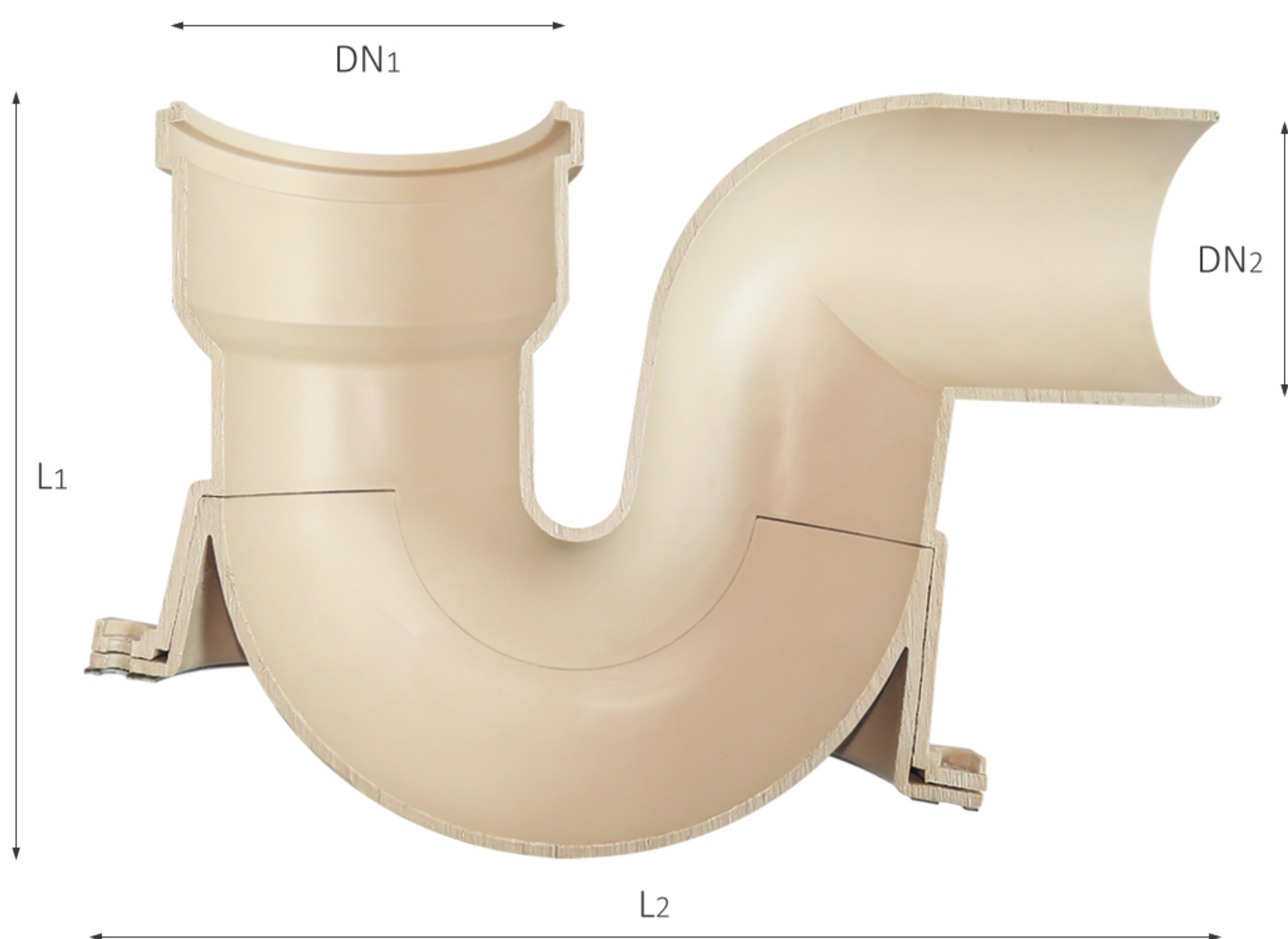
Preventing dangerous sewer gases from entering the dwelling with an adequate water seal of 51 mm in compliance with International Plumbing Code.



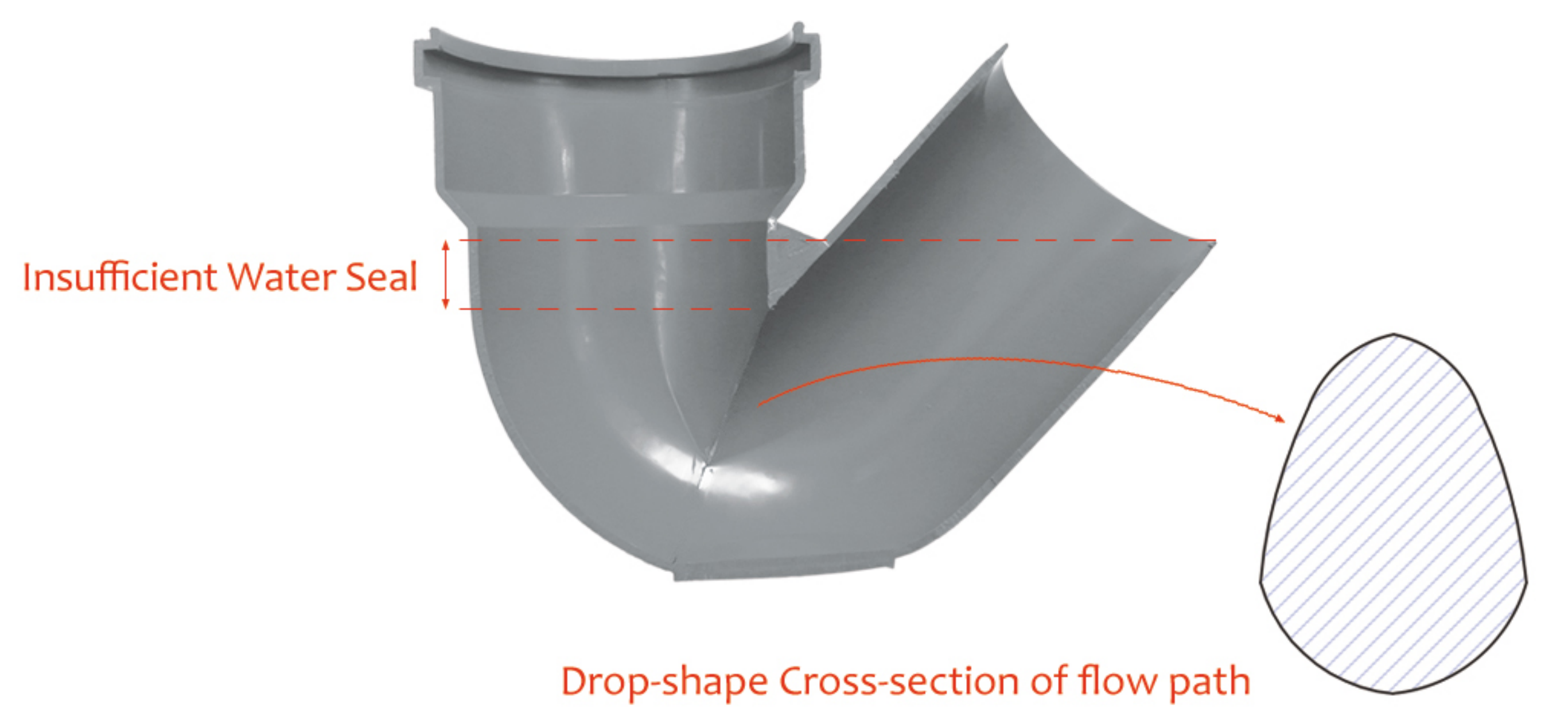
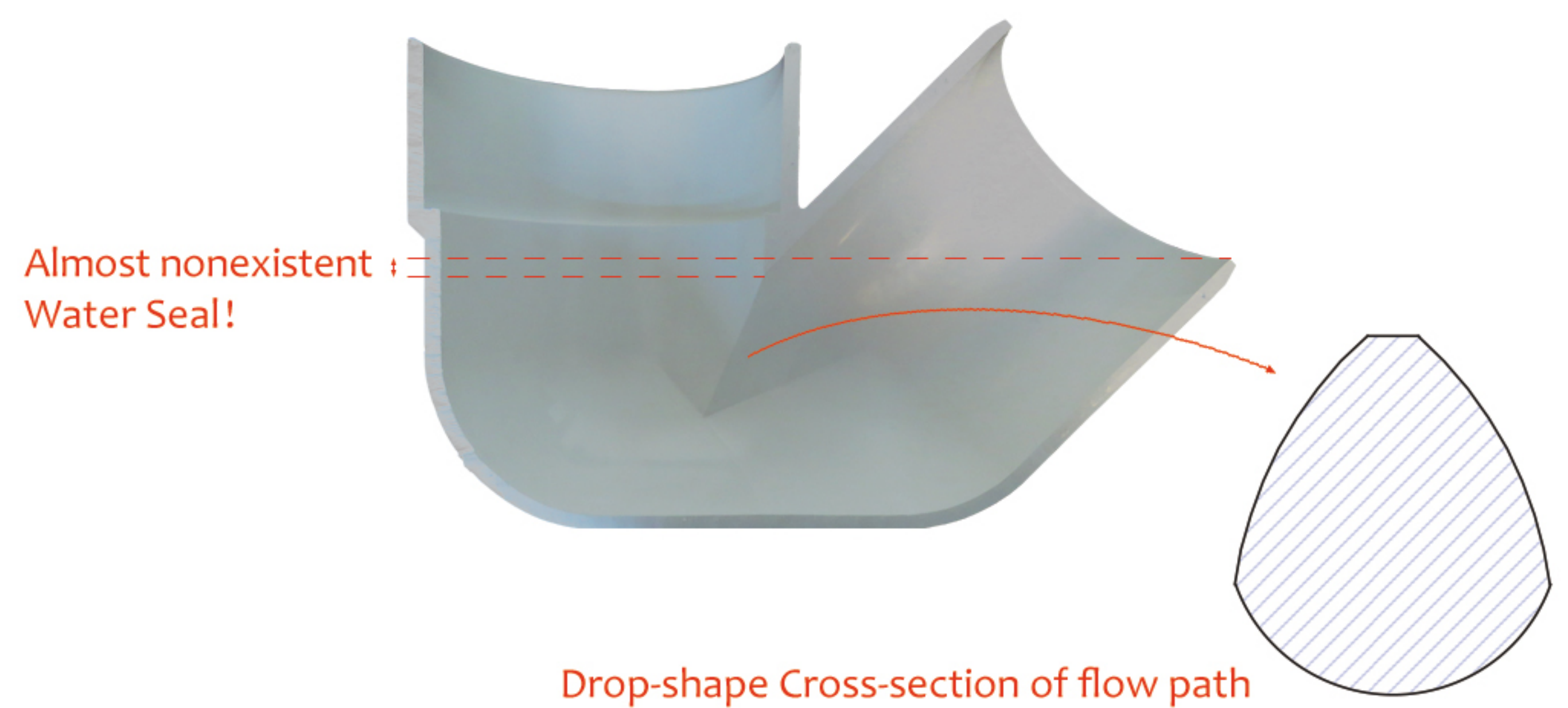
Trap connection to horizontal line doesn't require any additional bend. The uniform cross-section of water passage ensures easy replacement of the water column.

Comparison of flow path cross-section between the Gated Trap and other common prefabricated traps

In addition to providing easy accessibility for cleaning and inspection, the innovative design of Gated trap also provides a circular flow passage, without any reduction in cross-sectional area, in contrast to other common prefabricated traps.



Size	DN1 (mm)	DN2 (mm)	L1 (mm)	L2 (mm)
110	125	110	277	392
75	75	75	194	268



Manufacturing pipe fittings by injection moulding process—especially traps, which are very complex devices—requires an accurate design and a precisely manufactured mould. Injection moulding limitations has caused common prefabricated traps to be designed in a way that negatively affects the wastewater flow. The drop-shape cross-section increases the noise generation and the clogging possibility. Moreover, insufficient water seal increases the risk of trap seal loss and sewer gas contamination caused by evaporation and self-siphonage. These defects are unavoidable in a one-piece prefabricated trap.

Poliran Building, No. 17, Zagros St.,
Arjantin Sq., Tehran, Iran
Postal Code : 1516643311
Telephone : +98 21 88648843
WhatsApp : +98 912 9465921
export.dep@poliran.org

