

POLIRAN

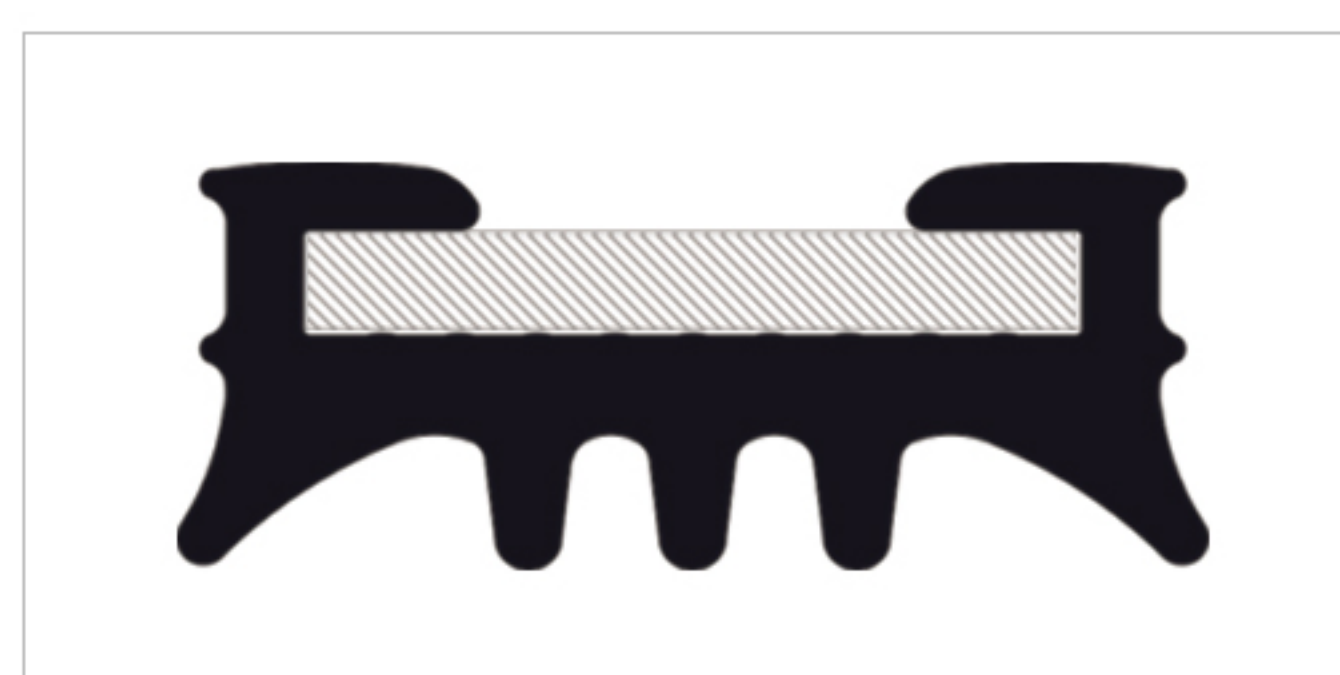
RC Clamp

Features and Advantages:

- Made of zinc plated steel
- High strength characteristics because of the 3-piece structure of the clamp body
- Outstanding noise insulation with the unique design of rubber lining, Exceeding the requirements of DIN 4109
- Noise insulating lining (age-resistant) in accordance with DIN 53505, DIN 53508 & DIN 53509
- Certified by the Fraunhofer institute of Germany
- Easy and secure installation with no need for a wrench because of using serrated flange bolts
- Available in 4 different types
- Suitable for soundproofing all kind of piping systems

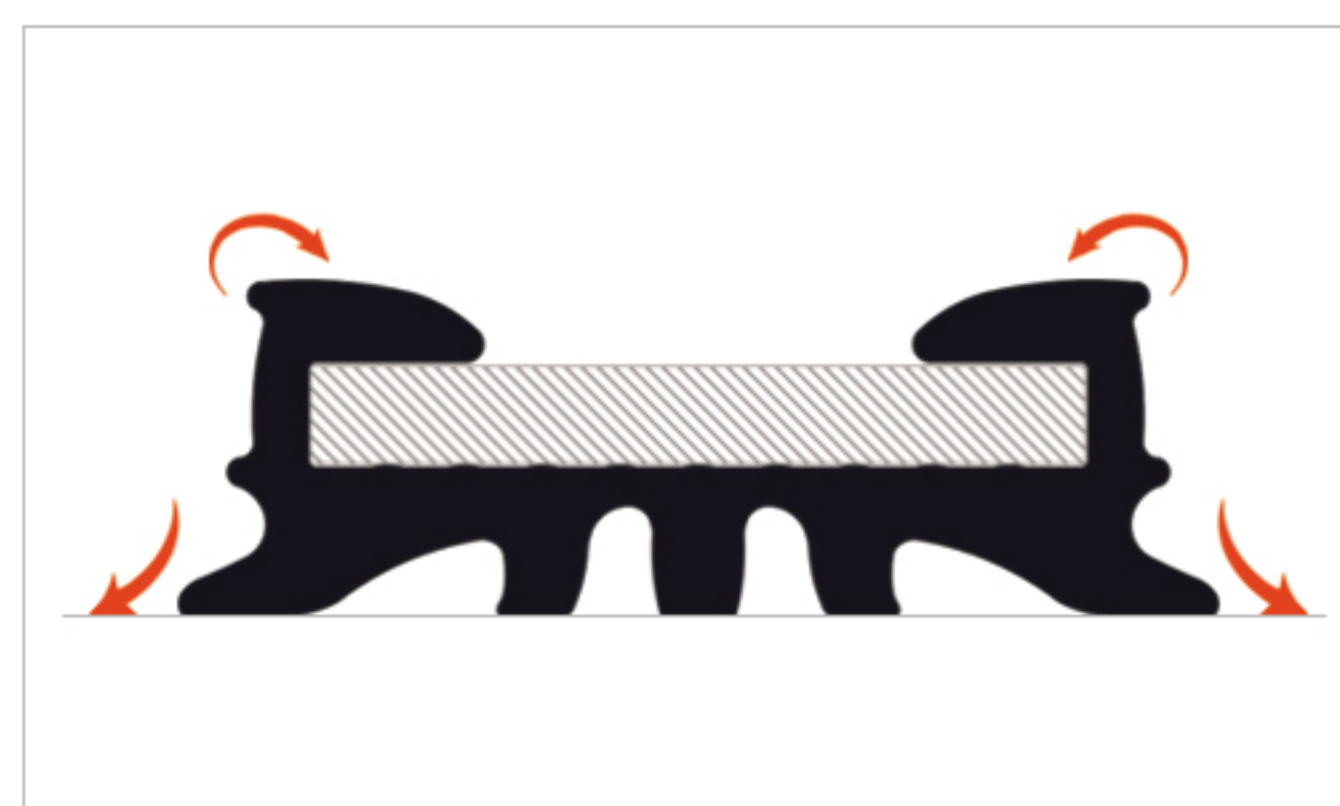
Before installation

Special design of rubber lining cross-section



After installation

When tightened around the pipe, the generated forces will cause the inlay to lock tighter on the clamp & also create a proper grip on pipe with minimum contact surface



Poliran RC

Noise-Reducing Pipe Clamp

Normal

Ø50 - Ø160 mm

Ultra-P

Ø50 - Ø160 mm



Ultra-P RC Clamp

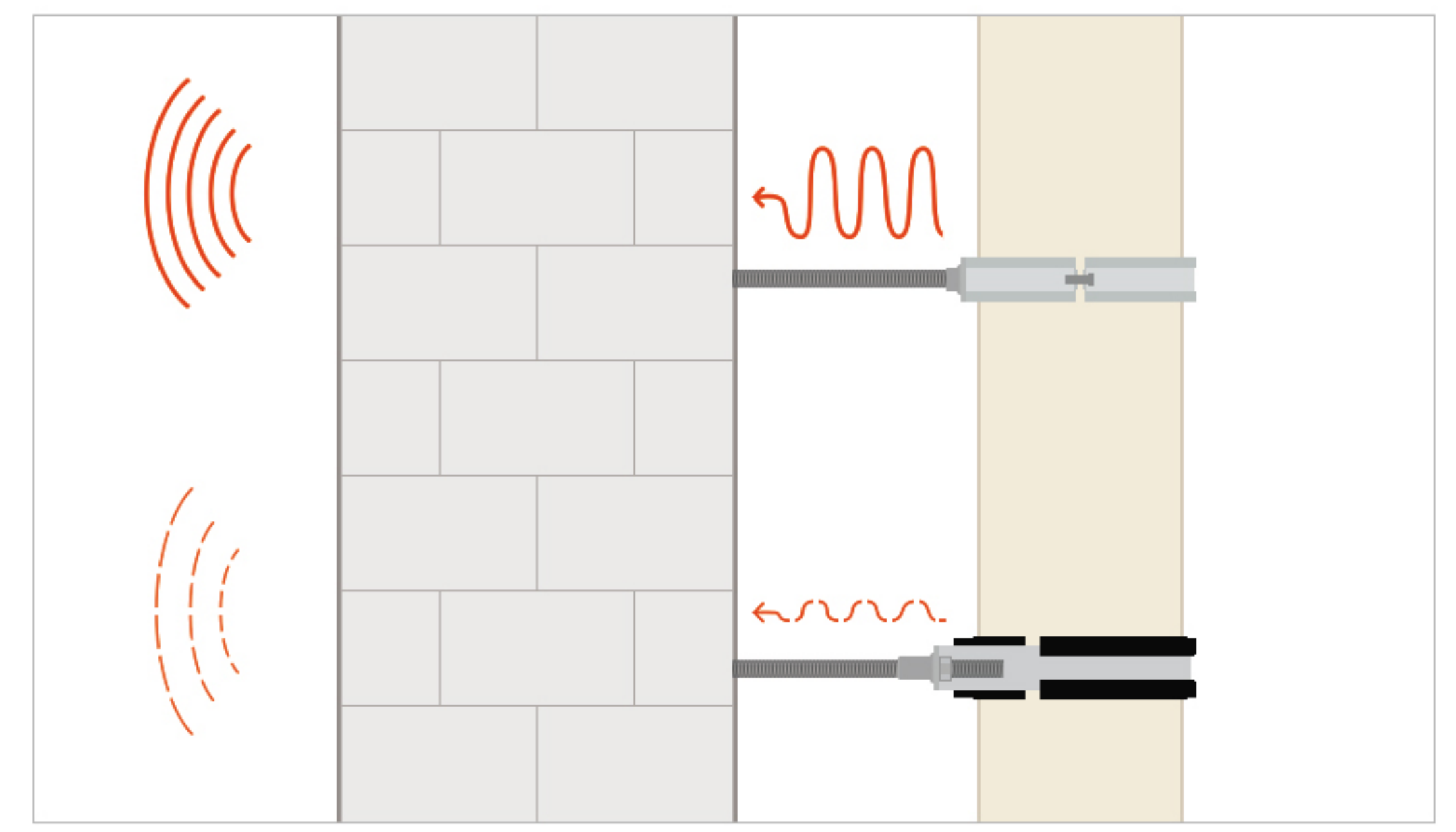
Ultra Protection Against Corrosion

- Zinc flake coating in compliance with EN 13858 and ISO 10683
- Suitable for use in corrosive environments C1-C4 in accordance with ISO 12944-2 & EN 14713
- Passed 1000 hours of salt spray test in accordance with ASTM B117-18 with less than 1% red rust
- Better corrosion resistance than hot dip galvanizing
- Best choice for highly humid locations, industrial projects, swimming pools and sport complexes, etc.

www.poliran.org

Drainage system is a significant source of noise in a building. The water flow inside the pipe transmits its vibrations to the surrounding air and supporting structures and causes noise audible in adjacent areas.

There are two types of noise in building drainage system; airborne noise and structure-borne noise. An effective noise reduction will be achieved by blocking noise transmission paths as much as possible. Airborne noise can be reduced by using a piping system made of soundproof material. Reducing structure-borne noise, however, requires a method to acoustically uncouple the system's vibrations from the building structure and walls.



Poliran RC is specially designed for soundproof drainage systems and significantly reduces the structure-borne noise

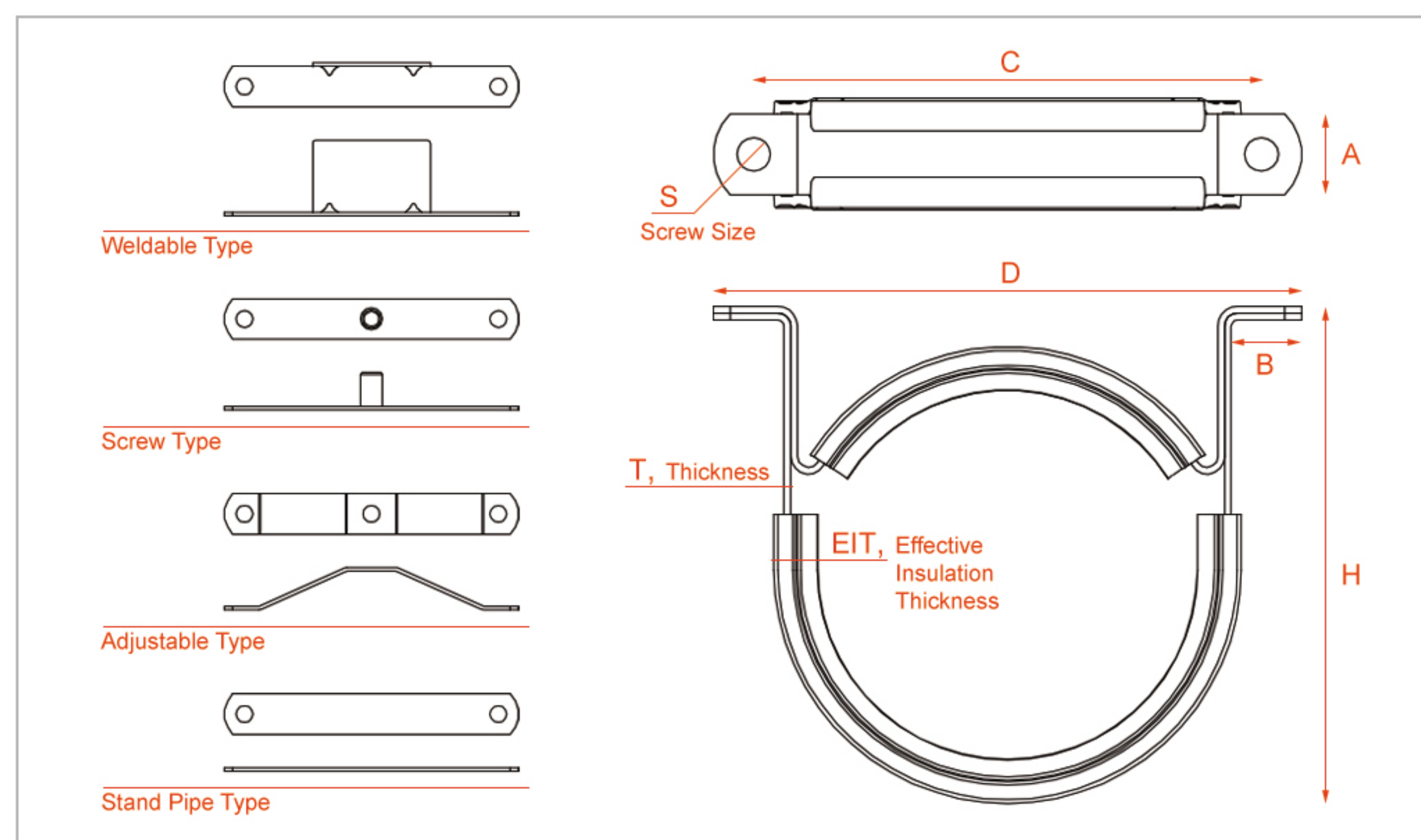
Acoustic Performance Evaluation

Test and measurements of noise emitted by a drainage system, including the pipe clamps, must be conducted in accordance with European standard EN 14366. Poliran RC, as a part of Poliran push-fit drainage system, has been tested by the renowned Fraunhofer institute of Germany and its outstanding acoustic performance has been certified.

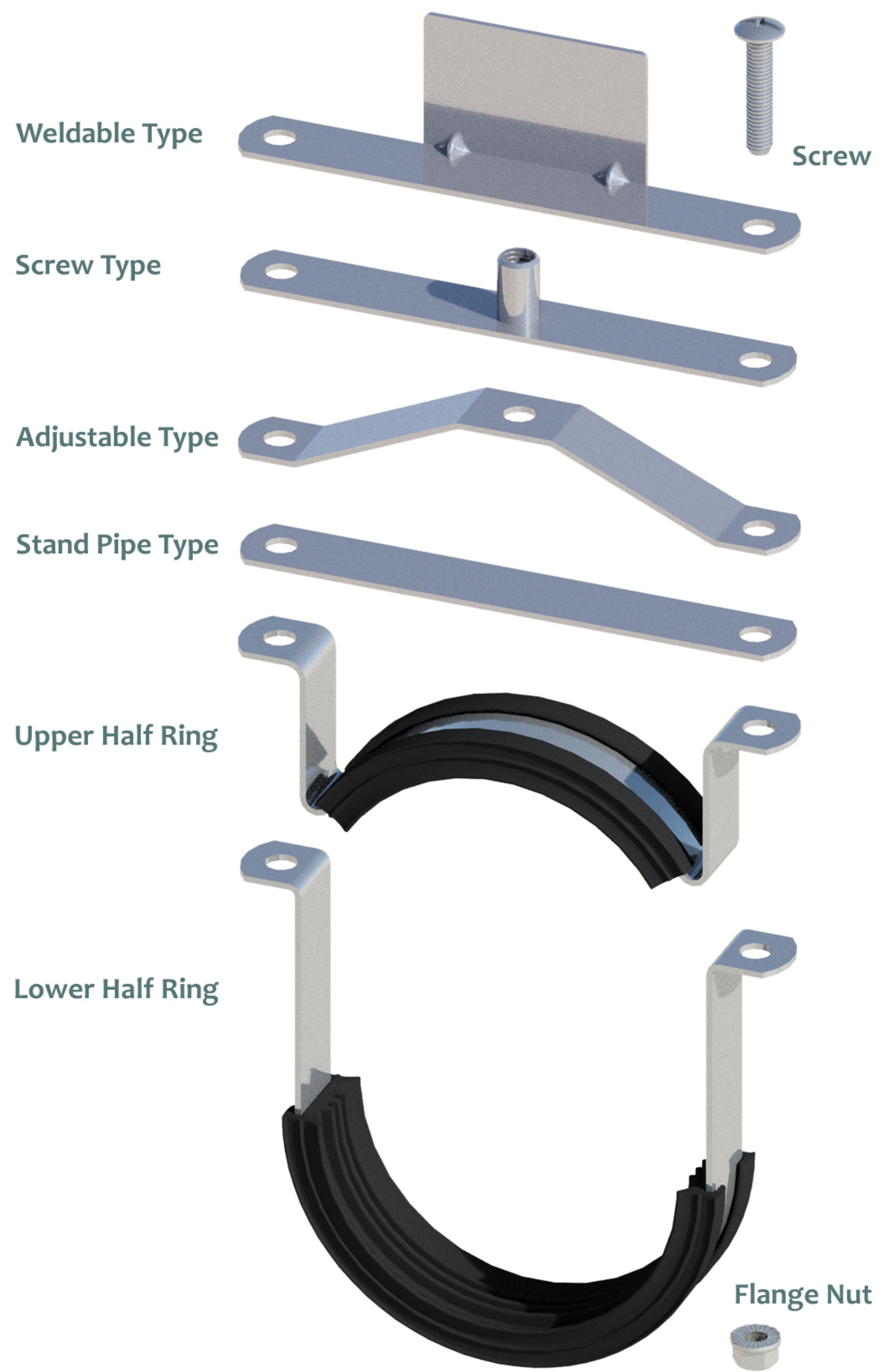
To compare Poliran RC's noise reducing performance with the best European products, Poliran's push-fit system has also been tested with the well known German product, "Bismat 1000" pipe clamp. The results, as shown here, confirms better performance of Poliran RC.

"POLIRAN HT Flame Retardant FOR SEWER S20, 110 x 2.7 mm" mounted with pipe clamps "POLIRAN RC" (manufacturer: Poliran Ettesal Co.).		Flow rate [l/s]			
		0.5	1.0	2.0	4.0
Structure-borne sound characteristic level $L_{sc,A}$ [dB(A)] according to EN 14366 for the basement test-room	UG rear	< 10	< 10	10	15

"POLIRAN HT Flame Retardant FOR SEWER S20, 110 x 2.7 mm" (manufacturer: Poliran Ettesal Co.) mounted with pipe clamps "Bismat 1000" made by Walraven.		Flow rate [l/s]			
		0.5	1.0	2.0	4.0
Structure-borne sound characteristic level $L_{sc,A}$ [dB(A)] according to EN 14366 for the basement test-room	UG rear	13	15	15	17



Size (mm)	EIT (mm)	S metric	A (mm)	B (mm)	C (mm)	D (mm)	H (mm)	T (mm)
50	6.5	M6	20	17	78	100	76	1.5
63	6.5	M6	20	20	105	130	81	1.5
75	6.5	M6	20	20	110	130	100	1.5
90	6.5	M6	20	20	128	150	112	1.5
110	7.5	M8	24	21	150	175	145	2.0
125	7.5	M8	24	23	170	192	160	2.5
160	8.0	M8	30	23	200	227	192	2.5



Weldable Clamp includes a welding surface and can be easily welded to any steel support.

Screw Clamp can be installed using one M10 screw with no need for an additional nut.

Adjustable Clamp can be installed using one M10 screw and can be easily adjusted to achieve a desired slope.

Stand Pipe Clamp has two bearing points and does not need additional screw or nuts for installation.

Contact Us :
 email : export.dep@poliran.org
 WhatsApp No : +98 912 9465921
 Tel : +98 21 88648843

